

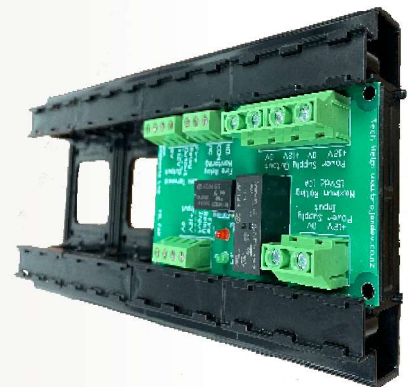
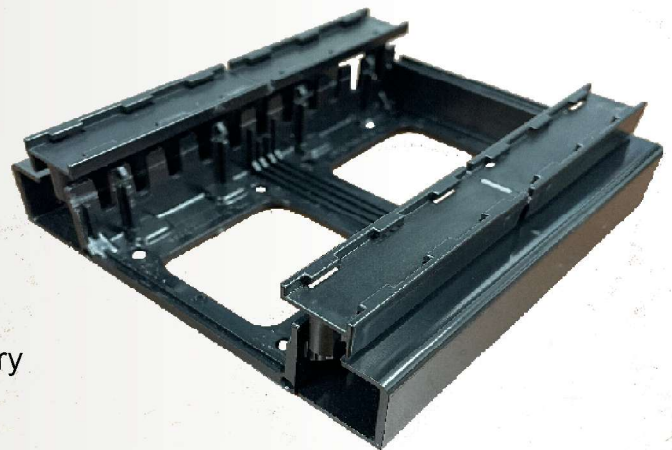
Mounting Base +

The TDL-MB+ is a universal Mounting Base for all TDL Relay, Fuse & Timer Boards. It makes installation quick, easy and tidy. Multiple TDL-MB+ units can be connected together to make up a complete system of relays, fuses, timers etc...

The design of the TDL-MB+ includes a concealed cable management system, external cable trunking and an in-built labelling system allowing for efficient installation to be completed to a high standard."

Features:

- ▼ Modular design whereby the holders can be connected together for multiple boards
- ▼ Built in cable way
- ▼ Built in cable trunking
- ▼ Removable label holders
- ▼ Reduced installation time (labour saving)
- ▼ High adhesion double-sided tape applied at factory with optional holes for screw fixing
- ▼ Heat resistant ABS plastic construction
- ▼ Easy to label your devices, inputs and outputs



Specifications:

- ▼ Dimensions: 110mm (w) x 105mm (h) x 33mm (d)

Product code:

- ▼ TDL-MB+