

Emergency Exit Device with LED indication

Technical Requirements

This unit operates the same way as the standard Em Rex[®] (Emergency Exit Device) but it also offers the added feature of back lighting which allows both easy location and greater safety in emergencies involving areas of limited lighting. It also operates from 10 to 30Vdc.

Installation Wiring Diagram

Set "A" Contacts wire in series with the lock power using the Common and Normally Closed contacts.

Set "B" Contacts can be connected direct to the alarm input on the CCTV system for recording the door activity once the Smart Em has been activated.

The +10 to 28Vdc supply powers the Smart Em Rex unit and should be powered from the same Power Supply as the Lock.

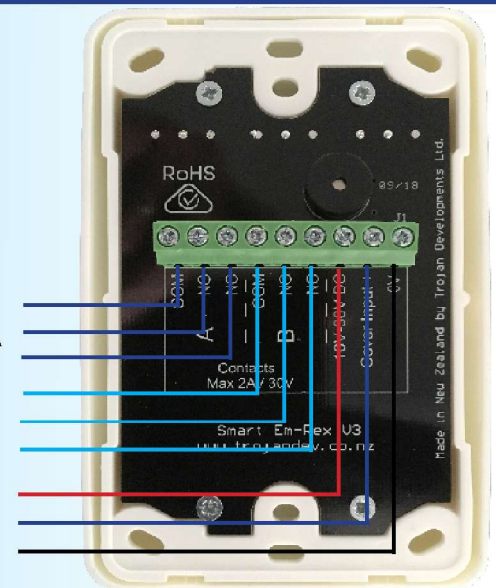
The optional Em Cover input can also be connected to the Smart Em Rex for power and monitoring.

The Smart Em Rex must be located in a position which will allow it to be operated by any person at the door with the operating position being not lower than 900mm from the floor, and not higher than 1350mm.

The Smart Em Rex must be clearly accessible, and not obscured from the vision of a person at the doorset.

Consideration should also be given to location of the Smart Em Rex to allow for operation by a person with disabilities.

COM } A
N/O }
N/C }
COM } B
N/O }
N/C }
+10-30Vdc
Cover Input
-0 Vdc



To Activate: Press firmly on window

Window is illuminated allowing it to be located in dark areas

Insert the Reset Tool in the slot and pull down



Product Code:

▼ Smart Em

▼ www.trojandev.co.nz

▼ sales@trojandev.co.nz



developing innovative egress solutions since 1987