

2025 Product Catalogue

Request to Exit Products Relays, Fuses & Timers



▼ www.trojandev.co.nz

▼ sales@trojandev.co.nz



developing innovative egress solutions since 1987

CONTENTS

TROJAN
DEVELOPMENTS

Table of Contents

Introduction:	3
Request & Emergency Egress Devices:	
Prox Rex®	4
Press Rex® Green / Green	5
Press Rex® Blue / Green	6
Em Rex®	7
Smart Em®	8
Em Rex Cover	9
Single Surface Mount	10
Vertical Double Surface Mount	11
Vertical Double Surround	12
Vertical Double Flush Box	13
Single Surrounds	14
Relay, Fuse & Timer Boards:	
TDL-1RB	15
TDL-2RB	16
TDL-4RB	17
TDL-4FB	18
TDL-8FB	19
TDL-TB	20
Fire Alarm Interface Board:	
TDL-FAB	
Mounting Bases for the Boards	
TDL-MB	21
MB+ with Cable way	22

INTRO

TROJAN
DEVELOPMENTS

About Trojan Developments

Introduction:

- ▼ Trojan Developments designs and manufactures a range of electronic security products to operate in conjunction with Access Control Systems.
- ▼ Founded in 1987, Trojan Developments has been involved in the electronic security industry for over 35 years and identified a need to provide the security industry with more professional looking, reliable and easy to operate egress solutions.
- ▼ In New Zealand and Australia our exit products have become the industry standard for egress devices.
- ▼ We also manufacture a range of Relay, Fuse and Timer Boards which are of a unique design to make the installation of Access Control Systems a lot simpler and quicker than using conventional PCBs when used in conjunction with our mounting base system.
- ▼ Our strong practical grounding in mechanical and design engineering combined with more than three decades in the security industry has enabled us to consider practical implications up front and produce a range of must-have visually sophisticated products that are functional, practical, reliable and quick & easy to install.
- ▼ We are committed to manufacturing innovative, quality products for the Access Control System market. We are always updating our existing products and bringing new products to the market through our network of distributors.

▼ www.trojandev.co.nz

▼ sales@trojandev.co.nz



developing innovative egress solutions since 1987

Touch-to-Exit request to exit device for use with Access Control Systems

The Prox Rex® (Touch to Exit) electronic switch is a low cost, touch sensitive switch unit designed for use with Access Control Systems and is an ideal replacement for conventional push buttons, door release buttons, call switches, etc.

Features:

- ▼ Requires only the lightest touch to activate, making it perfect for fast and easy egress, an advantage for the elderly and disabled
- ▼ Vandal-resistant – all components are behind the plate
- ▼ Perfect replacement for door release buttons that are in high usage areas
- ▼ No moving parts
- ▼ Ideal for areas where infection control is important
- ▼ Two LED indicators provide visual confirmation for heartbeat (Red) and operated (Green)
- ▼ Built-in sounder to provide audible confirmation of operation
- ▼ Easy to clean and fade resistant
- ▼ Black and Green surrounds are also available



Specifications:

- ▼ Single gang profile fits standard electrical flush box
- ▼ Power requirements 12Vdc - 50mA @ 13.6Vdc
- ▼ Two sets of clean N/O, N/C outputs
- ▼ The contacts are rated at 1A @ 30Vdc
- ▼ The switch is fully self-calibrating
- ▼ RCM, CE and RoHS Certified
- ▼ Weather Protected variant available (Prox Rex-WP), designed to meet the IP55 standard

Product code:

- ▼ Prox Rex
- ▼ Prox Rex-WP

Press-to-Exit: request to exit device with green illuminated button

The Press Rex® (Press to Exit) has an illuminated silicone push button of a size that can easily be pressed and seen in areas of limited lighting. It also operates from 12Vdc or 24Vdc.

Features:

- ▼ Has a large tactile button to give the user good feedback that the button has been pressed
- ▼ Durable surgical silicone button with embedded text
- ▼ The button is backlit green and changes to a brighter green upon activation.
- ▼ Inbuilt sounder to provide audible confirmation of operation
- ▼ Easy to clean and fade resistant
- ▼ Fits the TDL Surface Mounts and optional surrounds
- ▼ Black and Green surrounds are also available



Specifications:

- ▼ Single gang profile fits standard electrical flush box
- ▼ Power requirements 10 to 30Vdc - 50mA at 13.6Vdc and 25mA @ 27.2Vdc
- ▼ Two sets of clean N/O, N/C outputs
- ▼ The contacts are rated at 2 A @ 30Vdc
- ▼ Spare looping terminal
- ▼ RCM, CE and RoHS Certified
- ▼ Weather Protected variant available (Press Rex-G-G-WP), designed to meet IP55

Product code:

- ▼ Press Rex G-G
- ▼ Press Rex-G-G-WP

PRESS-REX®

Blue - Green

TROJAN
DEVELOPMENTS

Press-to-Exit: request to exit device with blue illuminated button

The Press Rex® (Press to Exit) has an illuminated silicone push button of a size that can easily be pressed and seen in areas of limited lighting. It also operates from 12Vdc or 24Vdc.

Features:

- ▼ Has a large tactile button to give the user good feedback that the button has been pressed
- ▼ Durable surgical silicone button with embedded text
- ▼ The button is backlit blue and changes to green upon activation.
- ▼ Inbuilt sounder to provide audible confirmation of operation
- ▼ Easy to clean and fade resistant
- ▼ Fits the TDL Surface Mounts and optional surrounds
- ▼ Black and Green surrounds are also available



Specifications:

- ▼ Single gang profile fits standard electrical flush box
- ▼ Power requirements 10 to 30Vdc- 50mA at 13.6Vdc and 25mA @ 27.2Vdc
- ▼ Two sets of clean N/O, N/C outputs
- ▼ The contacts are rated at 2A @ 30Vdc
- ▼ Spare looping terminal
- ▼ RCM, CE and RoHS Certified
- ▼ Weather Protected variant available (Press Rex B-G-WP), designed to meet IP55

Product code:

- ▼ Press Rex B-G
- ▼ Press Rex B-G -WP

▼ www.trojandev.co.nz

▼ sales@trojandev.co.nz



developing innovative egress solutions since 1987

Emergency Exit Device for use with Access Control Systems

The Em Rex® (Emergency Exit Device) is an emergency door release unit which can be used on its own or in conjunction with the Prox Rex® unit, to make up a total access controlled exit solution.

Features:

- ▼ Field resettable unit. A reset tool is supplied with every unit
- ▼ No breaking of glass when operated
- ▼ Two outputs; one set to break lock power and one set for status monitoring
- ▼ Visual confirmation of activation
- ▼ Audible confirmation of activation
- ▼ Ancillary input for remote operation of sounder
- ▼ Minimal moving parts
- ▼ Fits the TDL Surface Mounts and optional surrounds
- ▼ An Em Cover can be fitted to this unit to avoid malicious use
- ▼ The face plate will not deteriorate over time and is easily cleaned
- ▼ Black and Green surrounds are also available



Specifications:

- ▼ Single gang profile fits standard electrical flush box
- ▼ Power requirements 12Vdc (only if using inbuilt sounder)
- ▼ 10mA at 13.6Vdc
- ▼ Two sets of clean N/O, N/C outputs
- ▼ The contacts are rated at 1A @ 30Vdc
- ▼ RCM, CE and RoHS Certified & complies with BS 5839 Pt 2.
- ▼ Weather Protected variant available (Em Rex-WP), designed to meet IP55

Product code:

- ▼ Em Rex
- ▼ Em Rex-WP

Emergency Exit Device with LED Backlighting

The Smart Em operates the same way as the standard Em Rex[®] (Emergency Exit Device) but it operates from 12Vdc to 24Vdc.

The Smart EM[®] also has LED backlighting which allows both easy location and greater safety in emergencies involving areas of limited lighting.

Features:

- ▼ No breaking of glass when operated
- ▼ Two outputs: one set to break lock power and one set for status monitoring
- ▼ Visual confirmation of activation
- ▼ Audible confirmation of activation
- ▼ Ancillary input for remote operation of sounder
- ▼ Minimal moving parts
- ▼ LED backlighting to allow the unit to be easily located
- ▼ Field resettable unit. A reset tool is supplied with every unit
- ▼ Fits the TDL Surface Mounts and optional surrounds
- ▼ Em Cover can be fitted to this unit to avoid malicious use
- ▼ The face plate will not deteriorate over time and is easily cleaned
- ▼ Black and Green surrounds are also available



Specifications:

- ▼ Single gang profile fits standard electrical flush box
- ▼ Power requirements 10 to 30Vdc (only if using inbuilt sounder)
- ▼ 10mA at 13.6Vdc and 5mA @ 27.6Vdc
- ▼ Two sets of clean N/O, N/C outputs
- ▼ The contacts are rated at 2A @ 30Vdc
- ▼ LED backlighting
- ▼ RCM, CE and RoHS Certified & complies with BS 5839 Pt 2.
- ▼ Weather Protected variant available (Smart Em Rex-WP), designed to meet IP55

Product Code:

- ▼ Smart Em Rex
- ▼ Smart Em Rex-WP

EM-COVER

TROJAN
DEVELOPMENTS

Cover for use with Emergency Exit Device - Monitored

The Em Cover is for use with the Em Rex® and Smart Em® units to deter unintended or malicious activation of the unit when it is installed in a public area. The monitored version has two outputs which can be used to monitor the operation of the cover.

Features:

- ▼ Designed to complement the Em Rex® & Smart Em Rex® units and complies with local codes for emergency egress
- ▼ Two outputs; one set for local audible indication and one set for status monitoring by the Access Control System
- ▼ The Em Cover is secured behind the Em Rex® unit to prevent removal
- ▼ The cover is designed to latch closed to make its operation a deliberate action
- ▼ The cover is made of polycarbonate to withstand long term operation without any deterioration
- ▼ Text and graphics will not deteriorate over time and the unit is easily cleaned



Specifications:

- ▼ Overall dimensions; 92mm (w) x 153mm (h) x 20mm (d)
- ▼ Switching voltage max is 30Vdc @ 200mA
- ▼ Output for connection to the Em Rex® / Smart Em Rex® for audible indication
- ▼ N/C output for status monitoring to the Access Control System (opens on activation)

Product code:

- ▼ ECM (Emergency Cover Monitored)

▼ www.trojandev.co.nz

▼ sales@trojandev.co.nz



developing innovative egress solutions since 1987

Single Surface Mount

TROJAN
DEVELOPMENTS

Single Surface Mount

This single surface mount is for areas where you cannot recess the unit into the wall. It allows for the surface mounting of the Prox Rex, Press Rex, Em Rex and Smart Em Rex Units on to a solid wall.

Features:

- ▼ Can be used with all of the Trojan Developments egress products
- ▼ It matches the standard units in colour and shape
- ▼ It has locating pins for the correct placement of the egress products
- ▼ It has knock outs in the top, bottom and on both sides for 20mm conduit entries
- ▼ Product fixing screws are included



Specifications:

- ▼ The unit is 120mm H x 77mm W x 24mm D
- ▼ The mounting block includes two fixing screws
- ▼ The mounting holes are slotted to allow for adjustment on wall to ensure it is mounted straight

Product Code:

- ▼ TDL-SSM

▼ www.trojandev.co.nz

▼ sales@trojandev.co.nz



developing innovative egress solutions since 1987

Vertical Double Surface Mount

TROJAN
DEVELOPMENTS

Vertical Double Surface Mount

The vertical double surface mount is for areas where you cannot recess the unit into the wall. It allows for the surface mounting of the Prox Rex, Press Rex, Em Rex and Smart Em Rex Units on to a solid wall.

Features:

- ▼ Can be used with all of the Trojan Developments egress products
- ▼ It has locating pins for the correct placement of the egress units so that the Vertical Double surround fits perfectly
- ▼ It matches the standard units in colour and shape
- ▼ It has knock outs in the top, bottom and on both sides for 20mm conduit entries
- ▼ It comes complete with product fixing screws
- ▼ Please note that the Prox Rex / Press Rex units need to be positioned at the top as it is the most commonly used unit and helps prevent the Em Rex / Smart Em Rex being activated accidentally



Specifications:

- ▼ The unit is 245mm H x 77mm W x 24mm D
- ▼ The mounting block includes four fixing screws
- ▼ The mounting holes are slotted to allow for adjustment on wall to ensure it is mounted straight
- ▼ The Em Rex would typically be mounted at a height of 1000mm from the floor with the Prox Rex / Press Rex positioned above

Product Code:

- ▼ TDL-VDSM

▼ www.trojandev.co.nz

▼ sales@trojandev.co.nz



developing innovative egress solutions since 1987

Vertical Double Surround

TROJAN
DEVELOPMENTS

Double Surround for the Prox Rex® Press Rex, Em Rex and Smart Em Rex®

This allows the Prox Rex / Press Rex and Em Rex / Smart Em Rex to be mounted one above the other for a neat and tidy installation.

There is also an optional double mounting flush box to allow easy fixing to plaster board.

Features:

- ▼ Prox Rex is positioned in the top aperture as it is the most commonly used unit
- ▼ It matches the standard units in colour and shape
- ▼ Compatible with the Vertical Double Flush Box
- ▼ Please note that the Prox Rex / Press Rex units need to be positioned at the top as it is the most commonly used unit and helps prevent the Em Rex / Smart Em Rex being activated accidentally
- ▼ The small and streamlined presentation allows the units to be installed as a cohesive unit



Specifications:

- ▼ The unit is 240mm H x 77mm W x 27mm D and secures flush with the wall
- ▼ The Em Rex / Smart Em Rex would be mounted at a height of 1000mm from the floor with the Prox Rex / Press Rex positioned above

Product Code:

- ▼ TDL - VDS

▼ www.trojandev.co.nz

▼ sales@trojandev.co.nz



developing innovative egress solutions since 1987

Vertical Double Flush Box

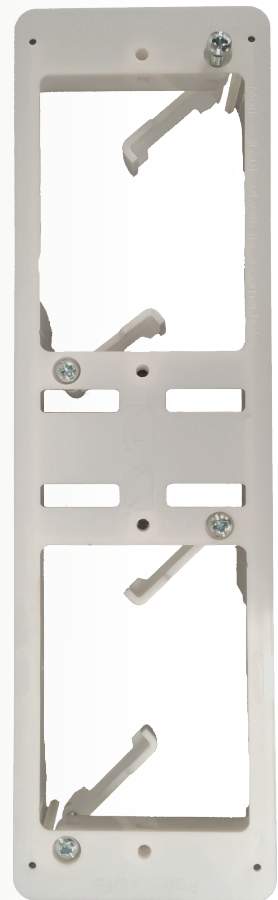
TROJAN
DEVELOPMENTS

Vertical Double Flush Box

This flush box is used to install the Trojan egress solution products in a vertical format. It allows the fitting of the Prox / Press Rex in the top position and Em Rex / Smart Em Rex or Em Cover below for a neat and tidy installation.

Features:

- ▼ Made from a strong Polycarbonate
- ▼ Built in wall board fixing clips
- ▼ Marking cut out template incorporated in the flush box (instructions on the front face)
- ▼ Option for stud fixing also to allow for pre fixing to plaster board
- ▼ It ensures that the Prox Rex, Press Rex, Em Rex and Smart Em Rex all line up for a nice tidy installation with the Em Rex / Smart Em Rex mounted below the Prox Rex / Press Rex



Specifications:

- ▼ The hole size required for installation is 220mm H x 58mm W and secures flush with the wall
- ▼ Includes the flush box, 4 x fixing clips and screws
- ▼ The flush box can be used as a template for cutting the hole in the wall by using the 4 corner holes on the flush box, for marking the corners of the cutout in the wall.

Product Code:

- ▼ TDL - VDFB

▼ www.trojandev.co.nz

▼ sales@trojandev.co.nz



developing innovative egress solutions since 1987

Single Surrounds

TROJAN
DEVELOPMENTS

Single Surrounds in White, Black and Green

These surrounds allow you to customise the look of the Prox Rex / Press Rex / Em Rex and the Smart Em Rex where the client has a particular requirement

Features:

- ▼ They fit in the same way as the surround that comes with the product, so it is an easy case of un-clipping one and clipping the new one on.



Specifications:

- ▼ Dimensions: 116mm H x 76mm W

Product code:

- ▼ TDL-SSW (White), SSB (Black) and SSG (Green)

▼ www.trojandev.co.nz

▼ sales@trojandev.co.nz



developing innovative egress solutions since 1987

TDL-1RB

TROJAN
DEVELOPMENTS

One Way Relay Board

The TDL-1RB is an 8 Amp Relay Board. It has 1 x 12Vdc input that switches a single pole double throw relay.

Features:

- ▼ Contact rated at 8 Amps AC/DC
- ▼ Modular unit that can be used to switch a number of devices
- ▼ Designed to be used as an interface between a low current switching control board and a high powered lock
- ▼ LED to indicate relay status
- ▼ Rising clamp type terminals will not damage cables and can accommodate up to a 2.5mm² (14AWG) cable
- ▼ Also designed to fit the TDL Mounting Base



Specifications:

- ▼ Single way Relay Board
- ▼ Operating Voltage 9 to 16Vdc - 38mA @ 13.6Vdc
- ▼ Current Draw of 38mA @ 13.6Vdc
- ▼ 12Vdc negative trigger input
- ▼ Single Pole Double Throw relay
- ▼ Relay contacts rated to a maximum current of 8 Amps
- ▼ Dimensions: 55mm (w) x 60mm (h) x 23mm (d)

Product code:

- ▼ TDL-1RB

▼ www.trojandev.co.nz

▼ sales@trojandev.co.nz



developing innovative egress solutions since 1987

TDL-2RB

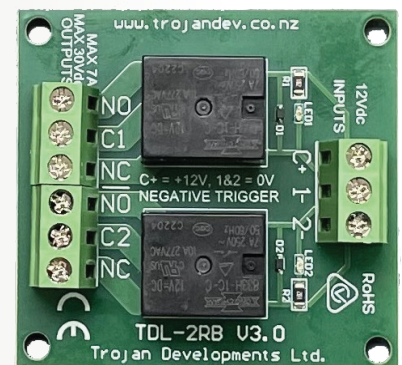
TROJAN
DEVELOPMENTS

Two Way Relay Board

The TDL-2RB is a 2 way 8 Amp Relay Board. It has 2 x 12Vdc inputs that can switch 2 separate single pole double throw relays.

Features:

- ▼ Contacts rated at 8 Amps AC/DC
- ▼ Modular unit that can be used to switch a number of devices
- ▼ Designed to be used as an interface between a low current switching control board and a high powered lock
- ▼ LED to indicate relay status
- ▼ Rising clamp type terminals will not damage cables and can accommodate up to a 2.5mm² (14AWG) cable
- ▼ Also designed to fit the TDL Mounting Base



Specifications:

- ▼ Two way Relay Board
- ▼ Operating Voltage 9 to 16Vdc - 38mA @ 13.6Vdc per relay
- ▼ 12Vdc negative trigger input
- ▼ Two Single Pole Double Throw relays
- ▼ Contacts rated at 8 Amps AC/DC
- ▼ Dimensions: 55mm (w) x 60mm (h) x 23mm (d)

Product code:

- ▼ TDL-2RB

▼ www.trojandev.co.nz

▼ sales@trojandev.co.nz



developing innovative egress solutions since 1987

TDL-4RB

TROJAN
DEVELOPMENTS

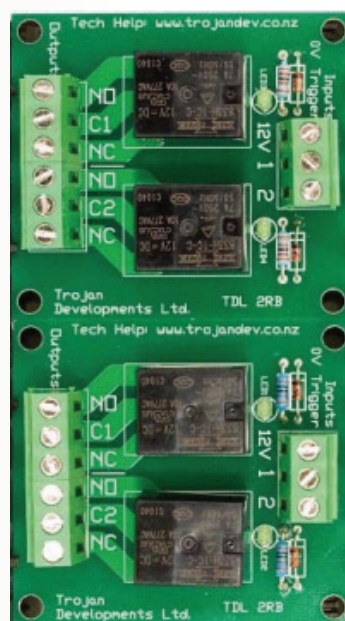
Four Way Relay Board

The TDL-4RB is a 4 Way 8 Amp Relay Board. It has 4 x 12Vdc inputs that can switch 4 separate 8 Amp single pole double throw relays.

Also designed to fit the TDL Mounting Base.

Features:

- ▼ Contacts rated at 8 Amps AC/DC
- ▼ Fits TDL-MB mounting base
- ▼ Modular unit that can be used to switch a number of devices
- ▼ Designed to be used as an interface between a low current switching control board and a high powered lock
- ▼ LED to indicate relay status
- ▼ Rising clamp type terminals will not damage cables and can accommodate up to a 2.5mm² (14AWG) cable status
- ▼ Also designed to fit the TDL Mounting Base



Specifications:

- ▼ Four way Relay Board
- ▼ Operating Voltage 9 to 16Vdc - 38mA @ 13.6Vdc per relay
- ▼ 12Vdc negative trigger input
- ▼ Four Single Pole Double Throw Relays
- ▼ Contacts rated at 8 Amps AC/DC
- ▼ Dimensions: 110mm (w) x 60mm (h) x 23mm (d)

Product code:

- ▼ TDL-4RB

▼ www.trojandev.co.nz

▼ sales@trojandev.co.nz



developing innovative egress solutions since 1987

TDL-4FB

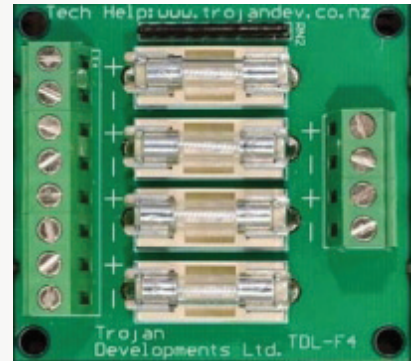
TROJAN
DEVELOPMENTS

Four Way Fuse

The TDL-4FB is a 4 Way Fuse Board. It has 4 individual fused outputs. Each fuse has an associated LED to indicate that the fuse is operative. The LED illuminates green for normal positive 12Vdc operation and amber for AC voltages up to 24Vac.

Features:

- ▼ 4 separate fused outputs
- ▼ The fuses are field replaceable
- ▼ Maximum fuse rating 5 Amps
- ▼ Fits TDL-MB mounting base
- ▼ Modular unit that can be used to protect a number of devices
- ▼ Rising clamp type terminals will not damage cables and can accommodate up to a 2.5mm² (14AWG) cable status
- ▼ Designed to be used as an interface between power supplies and field devices
- ▼ LEDs to indicate fuse status
- ▼ Also designed to fit the TDL Mounting Base



Specifications:

- ▼ 4-Way Fuse Board
- ▼ Fuse size: 20mm x 5mm
- ▼ Terminals for positive and negative outputs - the positive outputs are fused
- ▼ Suitable for AC and DC power supplies
- ▼ Maximum supply current per 4-way fuse board is 20 Amps
- ▼ Maximum output current is 5 Amps
- ▼ Dimensions: 55mm (w) x 60mm (h) x 23mm (d)

Product code:

- ▼ TDL-4FB

▼ www.trojandev.co.nz

▼ sales@trojandev.co.nz



developing innovative egress solutions since 1987

TDL-8FB

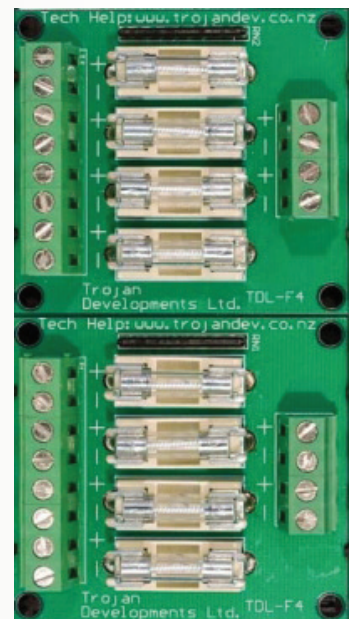
TROJAN
DEVELOPMENTS

Eight Way Fuse Board

The TDL-8FB is an 8 Way Fuse Board. It has 8 individual fused outputs. Each fuse has an associated LED to indicate that the fuse is operative. The LED illuminates green for normal positive 12Vdc operation and amber for AC voltages up to 24Vac.

Features:

- ▼ 8 separate fused outputs
- ▼ The fuses are field replaceable
- ▼ Maximum fuse rating 5 Amps
- ▼ Fits TDL-MB mounting base
- ▼ Modular unit that can be used to protect a number of devices
- ▼ Rising clamp type terminals will not damage cables and can accommodate up to a 2.5mm² (14AWG) cable
- ▼ Designed to be used as an interface between power supplies and field devices
- ▼ LEDs to indicate fuse status
- ▼ Also designed to fit the TDL Mounting Base



Specifications:

- ▼ 8-Way Fuse Board
- ▼ Fuse size: 20mm x 5mm
- ▼ Terminals for positive and negative outputs - the positive outputs are fused
- ▼ Suitable for AC and DC power supplies
- ▼ Maximum supply current per 4-way fuse board is 20 Amps (40 Amps Total)
- ▼ Maximum output current is 5 Amps
- ▼ Dimensions: 110mm (w) x 60mm (h) x 23mm (d)

Product code:

- ▼ TDL-8FB

▼ www.trojandev.co.nz

▼ sales@trojandev.co.nz



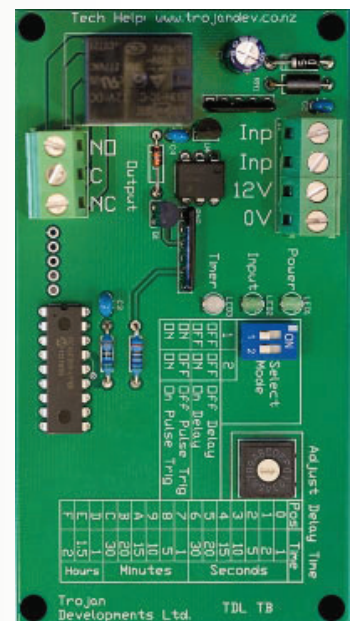
developing innovative egress solutions since 1987

Timer Board

The TDL-TB is a multifunction timer board. It has dip switches for field selectable defined time durations from 0.5 seconds up to 2 Hours. It is extremely versatile with 4 input modes (Off Delay, On Delay, Off Pulse & On Pulse) allowing endless application possibilities.

Features:

- ▼ Off Delay (loss of 0Vdc on the input gives an OFF delay on the output)
- ▼ On Delay (gain of 0Vdc on the input gives ON delay on the output)
- ▼ Off Pulse Trigger (the 0Vdc input is lost for a moment which gives an OFF delay on the output)
- ▼ On Pulse Trigger (the 0Vdc input is lost for a moment which gives an ON delay on the output)
- ▼ Time duration is easily set via the rotary dip switch, as listed on the board
- ▼ Set time will not drift as the components age or the temperature fluctuates
- ▼ On board LEDs indicate that the board has power, that the input has been operated, that the timer is counting down and that the output is triggered
- ▼ Rising clamp type terminals will not damage cables and can accommodate up to a 2.5mm² (14AWG) cable
- ▼ Also designed to fit the TDL Mounting Base



Specifications:

- ▼ 0.5 Second to 2 Hour selectable
- ▼ Operating Voltage 9 to 16Vdc - 17mA at 13.6 Vdc standby and 57mA energised
- ▼ Input terminals for a switched contact or a negative trigger
- ▼ Single Pole Double Throw relay output
- ▼ Contacts rated at 8 Amps AC/DC
- ▼ Dimensions: 110mm (w) x 60mm (h) x 23mm (d)

Product code:

- ▼ TDL-TB

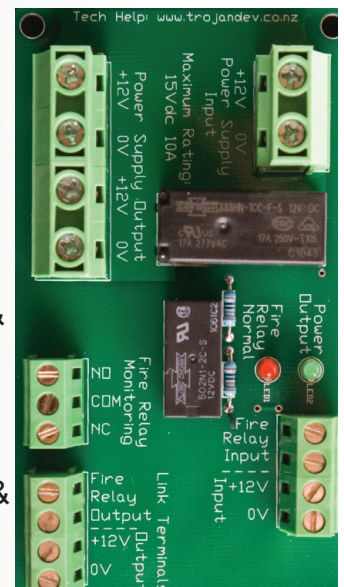
Fire Alarm Interface Board

The TDL-FAB is a Fire Alarm Interface board which allows for the control of the power to the Access Control system via an input from the Fire Alarm system to drop power from the Access Controlled doors upon fire alarm activation.

The TDL-FAB can also be daisy chained with multiple FABs so that the activation of the Fire Alarm input on a single board will trigger the fire alarm input on the other boards.

Features:

- ▼ Accepts normally closed, clean input from the Fire Alarm
- ▼ Isolated Lock Power input with two Lock Power outputs
- ▼ Control Output to allow daisy chaining of multiple TDL-FABs from a single fire alarm system.
- ▼ Control Output provides power for subsequent TDL-FABs ensuring synchronisation of all TDL-FABs (single power source for all TDL-FABs).
- ▼ On board LEDs indicate the status of the Fire Alarm system input & the Lock Power output.
- ▼ Single Pole Double Throw relay output for Fire Alarm status.
- ▼ Rising clamp type terminals will not damage cables and can accommodate up to two 2.5mm² cables on the power control side & one 2.5mm² cable on the control side.
- ▼ Also designed to fit the TDL Mounting Base



Specifications:

- ▼ Operating Voltage 9 to 16Vdc - 70mA @ 13.6 Vdc
- ▼ Control Contacts rated at 15Amps AC/DC
- ▼ Status Contacts rated at 8 Amps AC/DC
- ▼ Dimensions: 110mm (w) x 60mm (h) x 23mm

Product code:

- ▼ TDL-FAB

Mounting Base

The TDL-MB is a universal Mounting Base for all TDL Relay, Fuse & Timer Boards. It makes installation quick, easy and tidy. Multiple TDL-MBs can be connected together to make up a complete system of relays, fuses, timers etc...

The design of the TDL-MB includes a concealed cable management system and an in-built labelling system allowing for efficient installation to be completed to a high standard."

Features:

- ▼ Modular design whereby the holders can be connected together for multiple boards
- ▼ Built in cable way
- ▼ Removable label holders
- ▼ Reduced installation time (labour saving)
- ▼ High adhesion double-sided tape applied at factory with optional holes for screw fixing
- ▼ Heat resistant ABS plastic construction
- ▼ Easy to label your devices, inputs and outputs



Specifications:

- ▼ Dimensions: 110mm (w) x 85mm (h) x 33mm (d)

Product code:

- ▼ TDL-MB

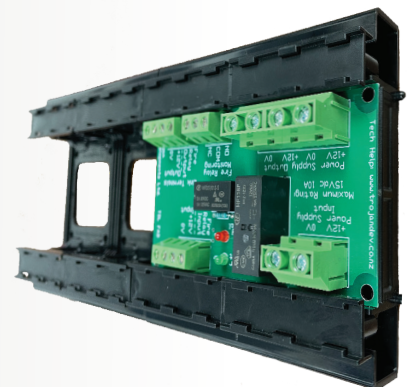
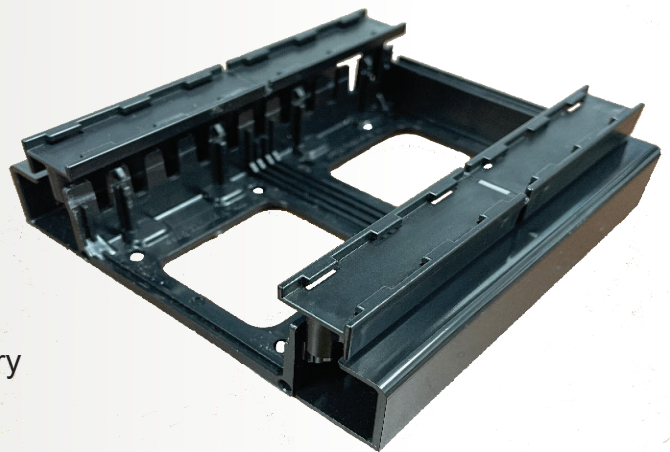
Mounting Base +

The TDL-MB+ is a universal Mounting Base for all TDL Relay, Fuse & Timer Boards. It makes installation quick, easy and tidy. Multiple TDL-MB+ units can be connected together to make up a complete system of relays, fuses, timers etc...

The design of the TDL-MB+ includes a concealed cable management system, external cable trunking and an in-built labelling system allowing for efficient installation to be completed to a high standard."

Features:

- ▼ Modular design whereby the holders can be connected together for multiple boards
- ▼ Built in cable way
- ▼ Built in cable trunking
- ▼ Removable label holders
- ▼ Reduced installation time (labour saving)
- ▼ High adhesion double-sided tape applied at factory with optional holes for screw fixing
- ▼ Heat resistant ABS plastic construction
- ▼ Easy to label your devices, inputs and outputs



Specifications:

- ▼ Dimensions: 110mm (w) x 105mm (h) x 33mm (d)

Product code:

- ▼ TDL-MB+